

CREDIT DESIGNATION

Temple University Hospital – Abdominal Transplant Department, provider #1559, is approved as a provider for social work continuing education by the Association of Social Work Boards (ASWB) www.aswb.org, through the Approved Continuing Education (ACE) program. Temple University Hospital – Abdominal Transplant Department maintains responsibility for the program. ASWB Approval Period: _____. Social workers should contact their regulatory board to determine course approval. Social Workers participating in this course will receive 5 continuing education clock hours.

CONFLICT OF INTEREST

Faculty and others who have the ability to control the content of continuing education activities sponsored by Temple Health are expected to disclose to attendees whether they have any real or apparent conflicts of interest or other relationships related to the content of their presentations.

FOR MORE INFORMATION

For questions relating to the Kidney Transplant Symposium, please contact Melissa Bowman at 215-707-0566 or melissa.bowman@tuhs.temple.edu or visit abdominal.templehealth.org.

Temple Health refers to the health, education and research activities carried out by the affiliates of Temple University Health System (TUHS) and by the Lewis Katz School of Medicine at Temple University. TUHS neither provides nor controls the provision of health care. All health care is provided by its member organizations or independent health care providers affiliated with TUHS member organizations. Each TUHS member organization is owned and operated pursuant to its governing documents.

Non-discrimination notice:
Temple University Hospital does not exclude participation in, and no one is denied the benefits of, the delivery of quality medical care on the basis of race, religious creed, sex, sexual orientation, gender identity, disability, age, ancestry, color, national origin, physical ability, or source of payment.

TH-180014 3/18 500QTY

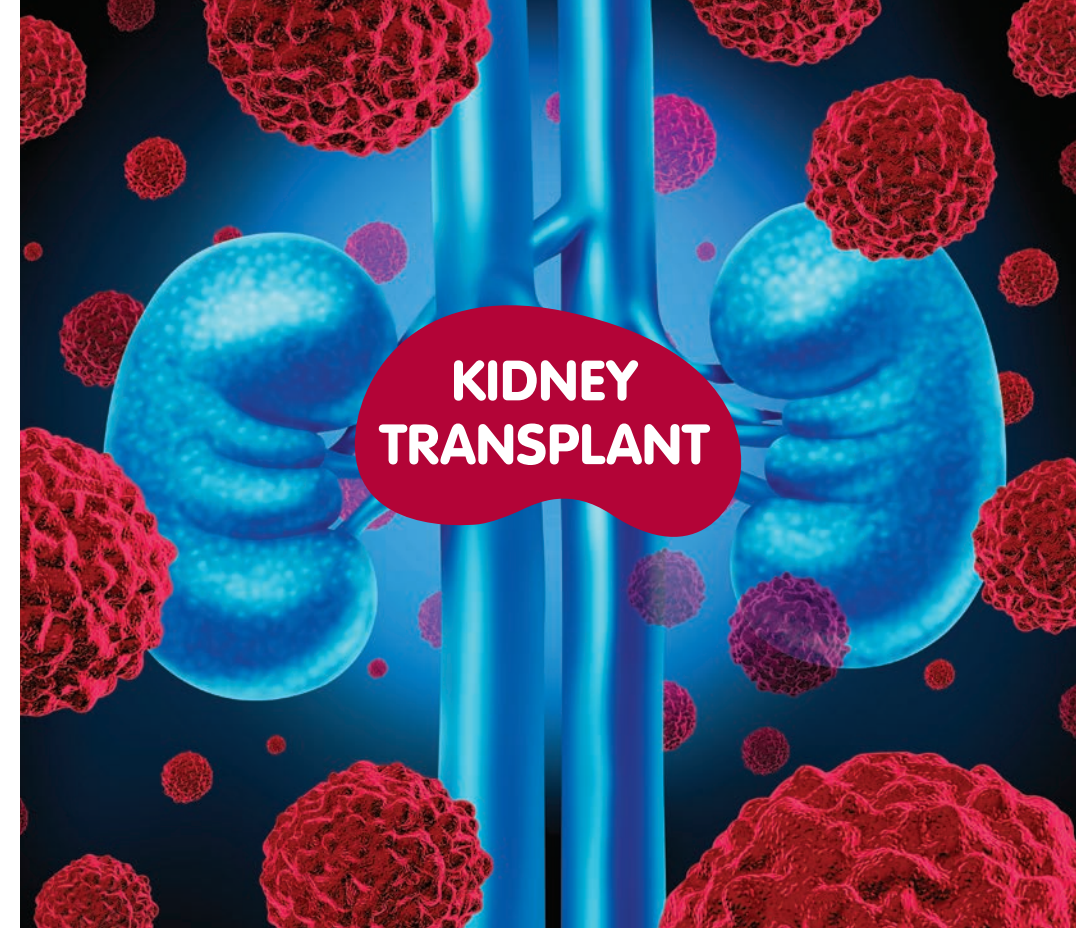
Abdominal Organ
Transplant Program
TEMPLE HEALTH

Temple Kidney Transplant Program
Parkinson Pavilion, C010
3401 North Broad Street
Philadelphia, PA 19140

KIDNEY TRANSPLANT SYMPOSIUM 2018

NAVIGATING THROUGH TRANSPLANT

Tuesday, June 12th



KIDNEY TRANSPLANT SYMPOSIUM 2018

NAVIGATING THROUGH TRANSPLANT

Abdominal Organ
Transplant Program
TEMPLE HEALTH

KIDNEY TRANSPLANT SYMPOSIUM 2018: NAVIGATING THROUGH TRANSPLANT

DATE: Tuesday, June 12, 2018

TIME: 8:00 AM – 4:00 PM

LOCATION: Medical Education and Research Building, Suite 217
Lewis Katz School of Medicine at Temple University
3500 N. Broad Street, Philadelphia, PA

CONTINUING 5.0 CEs

EDUCATION: Attendees will receive a printed certificate for five continuing education credits, immediately upon completion of the course and participation evaluation.

RSVP: By June 7th:
Melissa Bowman
267-788-0566 or
melissa.bowman@tuhs.temple.edu

This is a free event. To request accommodations for individuals with disabilities, contact Melissa Bowman at 267-788-0566 or melissa.bowman@tuhs.temple.edu.

WHO SHOULD ATTEND

Nurses, social workers, dialysis center staff and other healthcare professionals involved in the care of patients before, during and after kidney transplantation.

PROGRAM DESCRIPTION

Kidney Transplant Symposium 2018: Navigating Through Transplant will address topics in the continuum of care for patients who require a kidney transplant. The emphasis will be on optimizing clinical management, patient education and support before and after kidney transplantation. The symposium will include presentations by members of the Temple Kidney Transplant Program and personal accounts from living donors and recipients.

LEARNING OBJECTIVES

1. Break down transplant options for patients
2. Explain major changes to Allocation System
3. Define transplant for Patients with Diabetes and renal failure
4. Break down, recall, and explain real life experience with transplant
5. Construct an immunosuppressive regimen based on patient-specific characteristics
6. Explain the impact of weight for transplant patients
7. Summarize the facts about living donation and demonstrate ways to talk about living donation

For more information, visit abdominal.templehealth.org

AGENDA AND SPEAKERS

8:00 – 9:00 AM

Welcome and Registration (Continental Breakfast)

9:00 – 9:15 AM

Introduction to Temple Transplant Team

Dr. Antonio Di Carlo, MD, CM, FACS, FRCSC

9:15 – 10:15 AM

Navigating Through Transplant Options

Dr. Sunil Karhadkar, MD, Ph.D.

10:15 – 10:45 AM

Kidney Allocation Defined

Dr. Serban Constantinescu, MD, Ph.D.

10:45 – 11:15 AM

What if Your Patient Has Diabetes

Dr. Antonio Di Carlo, MD, CM, FACS, FRCSC

11:15 – 11:45 AM

Break/Grab Lunches

11:45 AM – 12:45 PM

Patient Panel

Recipient and Living Donor

12:45 – 1:45 PM

How Many Pills Will I Have to Take:

Immunosuppression in Kidney Transplant

Adam Diamond, PharmD, BCPS

1:45 – 2:15 PM

How Can Weight Affect My Transplant:

Weight Loss and Management

Jacquelyn Costa, MA, RD, LDN and Emily Ruzicka, RD, LDN

2:15 – 2:45 PM

Helping Break the Ice: How to Talk About Living Donation

Heather Marzucco, RN, BSN

Nurse Coordinator, Kidney Transplant Program

2:45 – 3:00 PM

Closing Remarks

Antonio Di Carlo, MD, CM, FACS, FRCSC

3:00 – 4:00 PM

Complete Evaluations and Certificate Pick Up